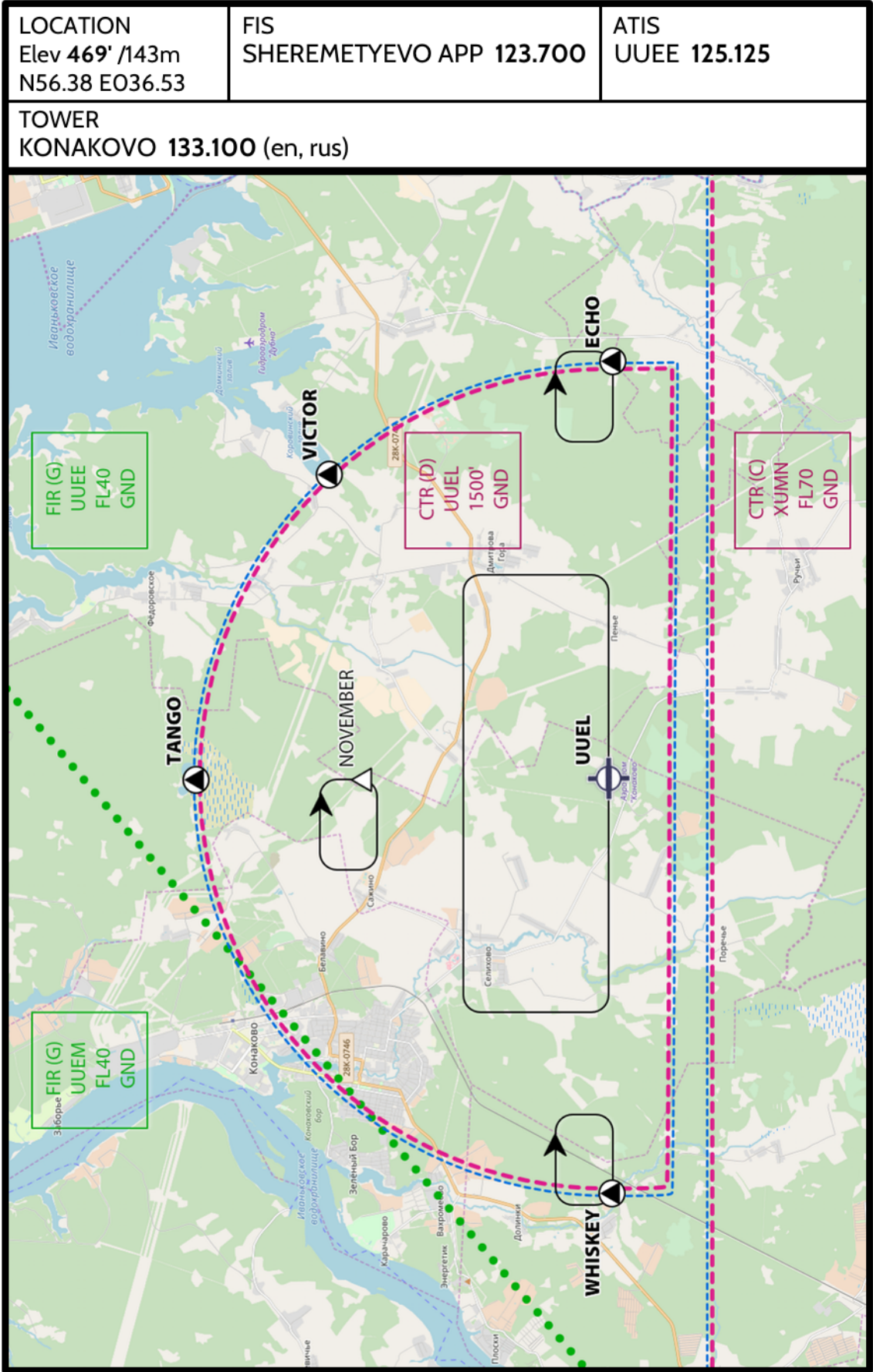


# UUEL KONAKOVO

# KONAKOVO RUSSIA

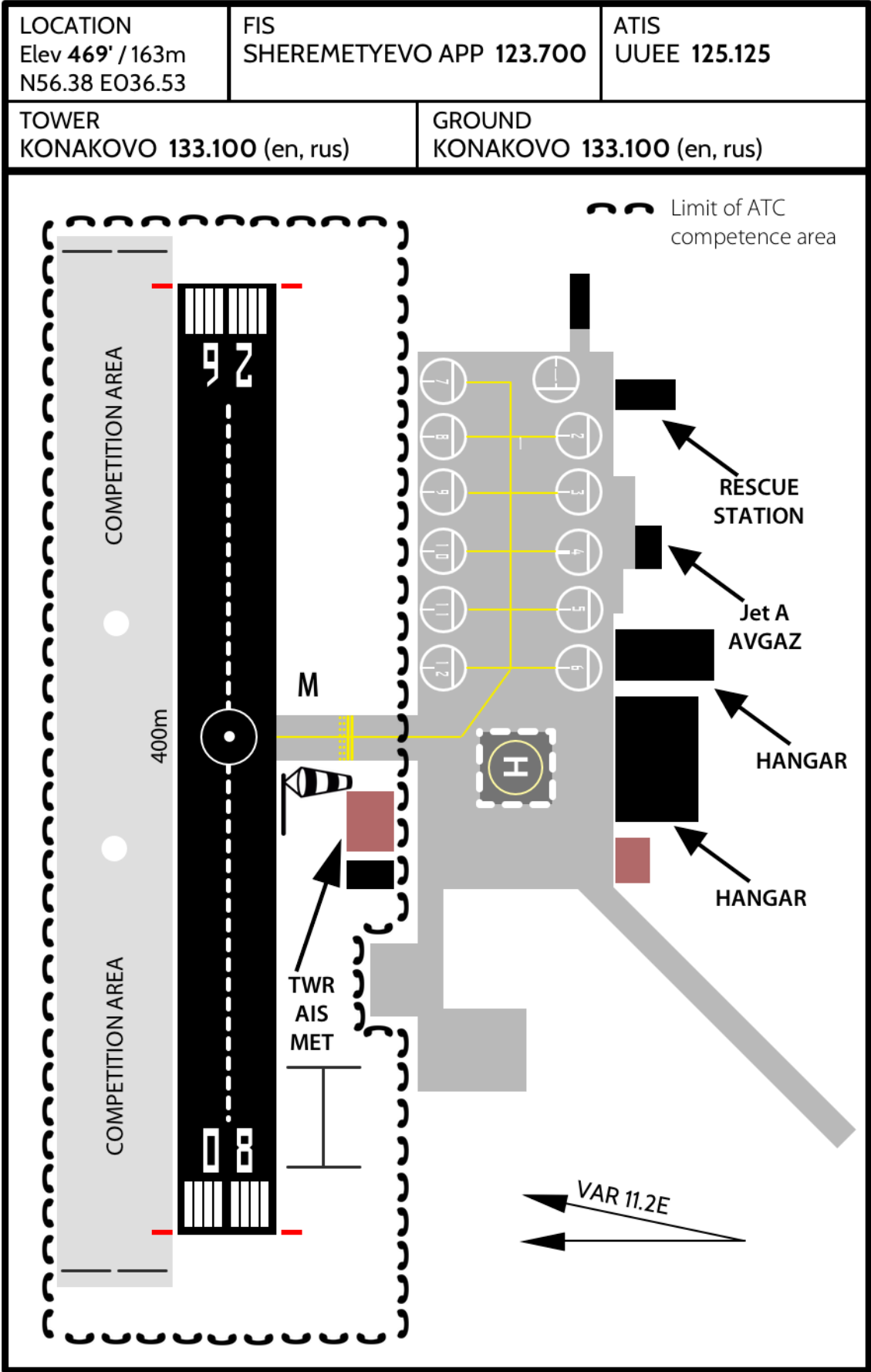
VAR 11.2E



UUEL  
KONAKOVO

KONAKOVO  
RUSSIA

VAR 11.2E



**Procedures for TKOF/LDG of HELs**

TKOF/LDG of HELs take place on the RWY.

HELs with skid undercarriage are to use all normal TWYs as air TWYs.

**Procedures for VFR flights within Konakovo CTR**

Plan CTR entry and exit only via REPs WHISKEY, TANGO, VICTOR or ECHO.

**Communication Failure**

ACFT outside controlled ASP experiencing COM failure and which have not received clearance, should land at AD outside the control zone.

**ATC Clearance**

Obtain ATC clearance from "Konakovo Delivery" on 133,1. Report information ATIS on initial contact.

**Fuel facilities**

Jet A-1  
AVGAZ

**Administration**

Office: +79162412078  
ATS: +79157405431, +79261540109

**Operational hours**

06:00 - 18:00 LOCAL TIME

**Web-Site**

<http://www.konakovo.aero>

**Infrastructure**

Hotel, parking, restaurant (see operational hours).

**RWY**

400x19 meters, asphalt, 08/26, for day flights only.